

APPSUITE: INTRODUCTION

Congratulations! You successfully installed your new *all-in-one touchscreen content management suite.*



SWIPE LEFT

BASIC CONTROLS



TAP

Activate elements like buttons or on/off switches.



SCALE

Pinch with two fingers to scale elements up / down.



HAND GESTURES

Use 3+ fingers to interact with larger objects like windows.



MOVE

Drag / swipe elements in the desired position.

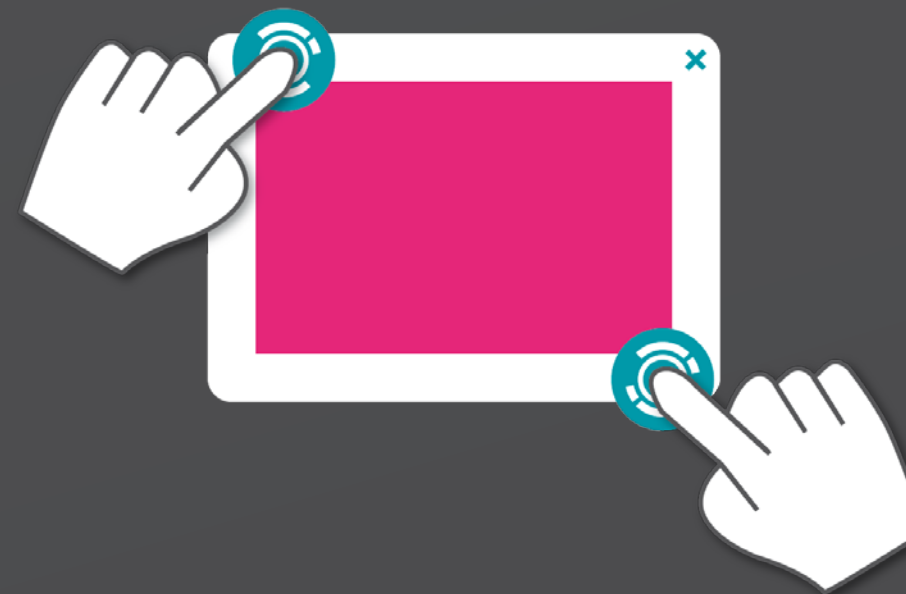


ROTATE

Rotate elements in the desired direction.



SINGLE FINGER (BORDER)

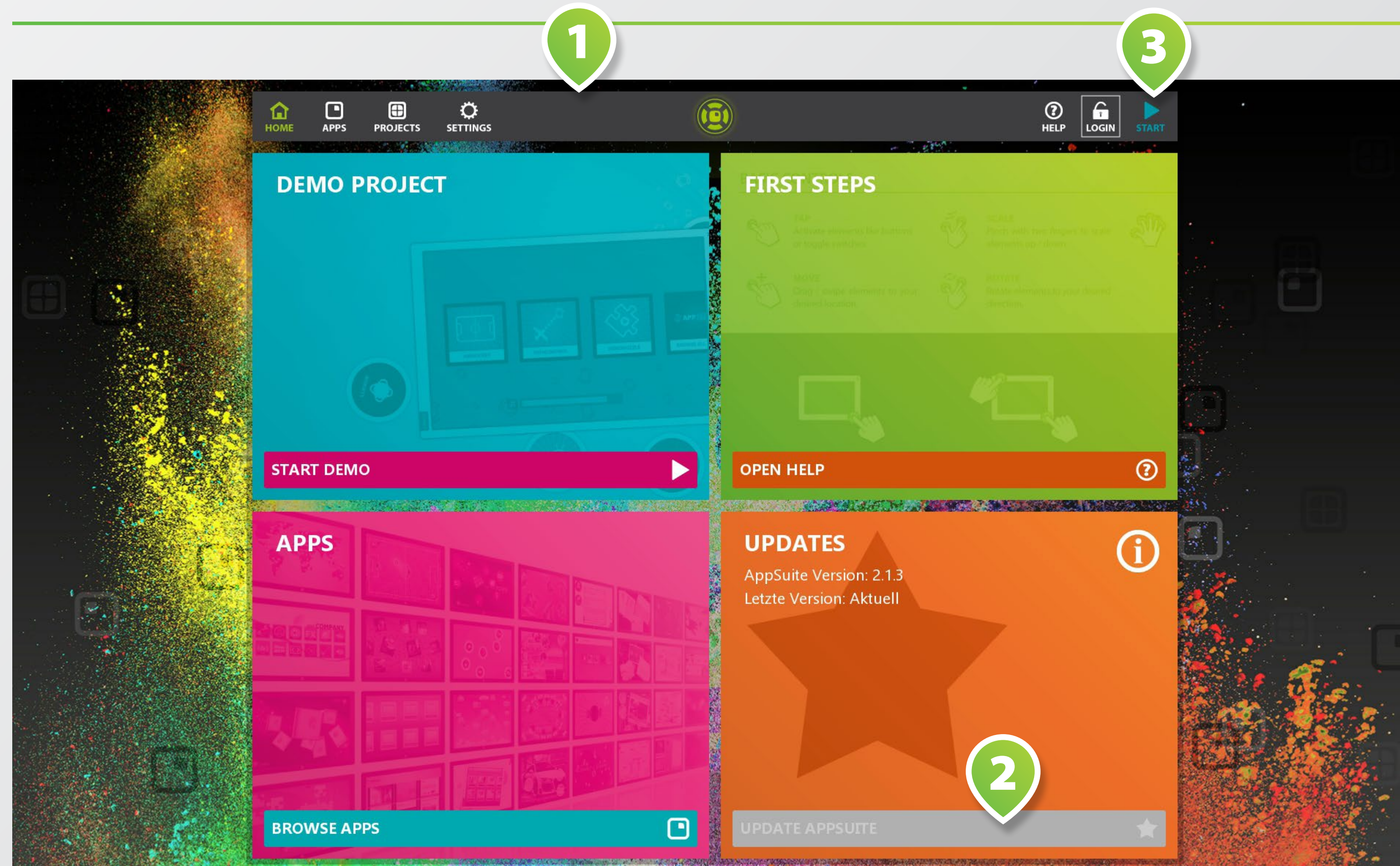


TWO FINGERS (BORDER)



HAND (CONTENT)

HOME SCREEN



Welcome to the **BACKEND** of the AppSuite. Here you may start apps, create and customize apps and projects, download updates, acquire licenses, and much more...

Browse through the different sections via **MAIN MENU 1**.

Check for AppSuite updates in the **UPDATE TILE 2**. If available, tap on **UPDATE BUTTON** to start the update process.

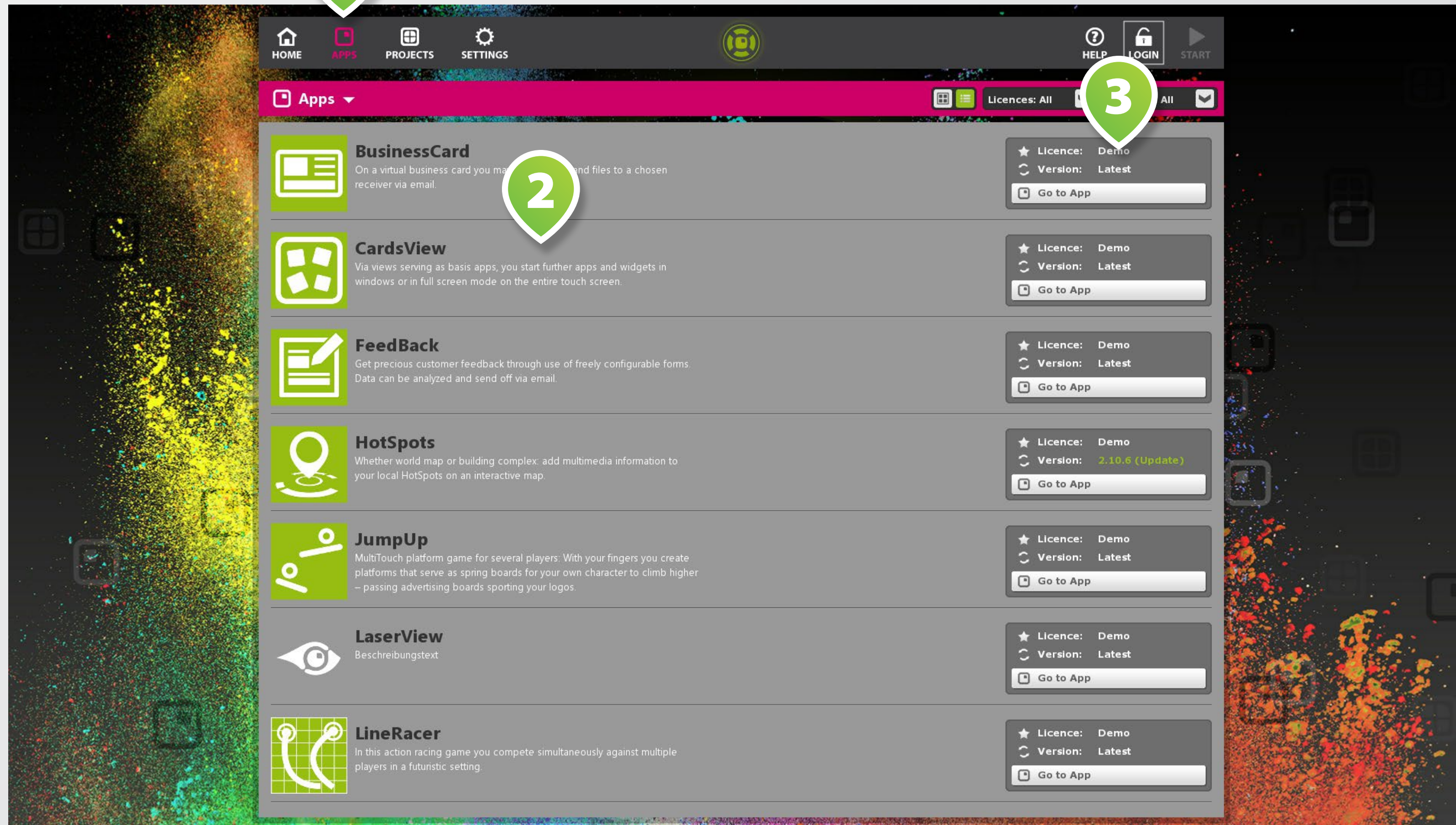
Start current active project by tapping on the top right **START BUTTON 3**.

APPS

1

2

3

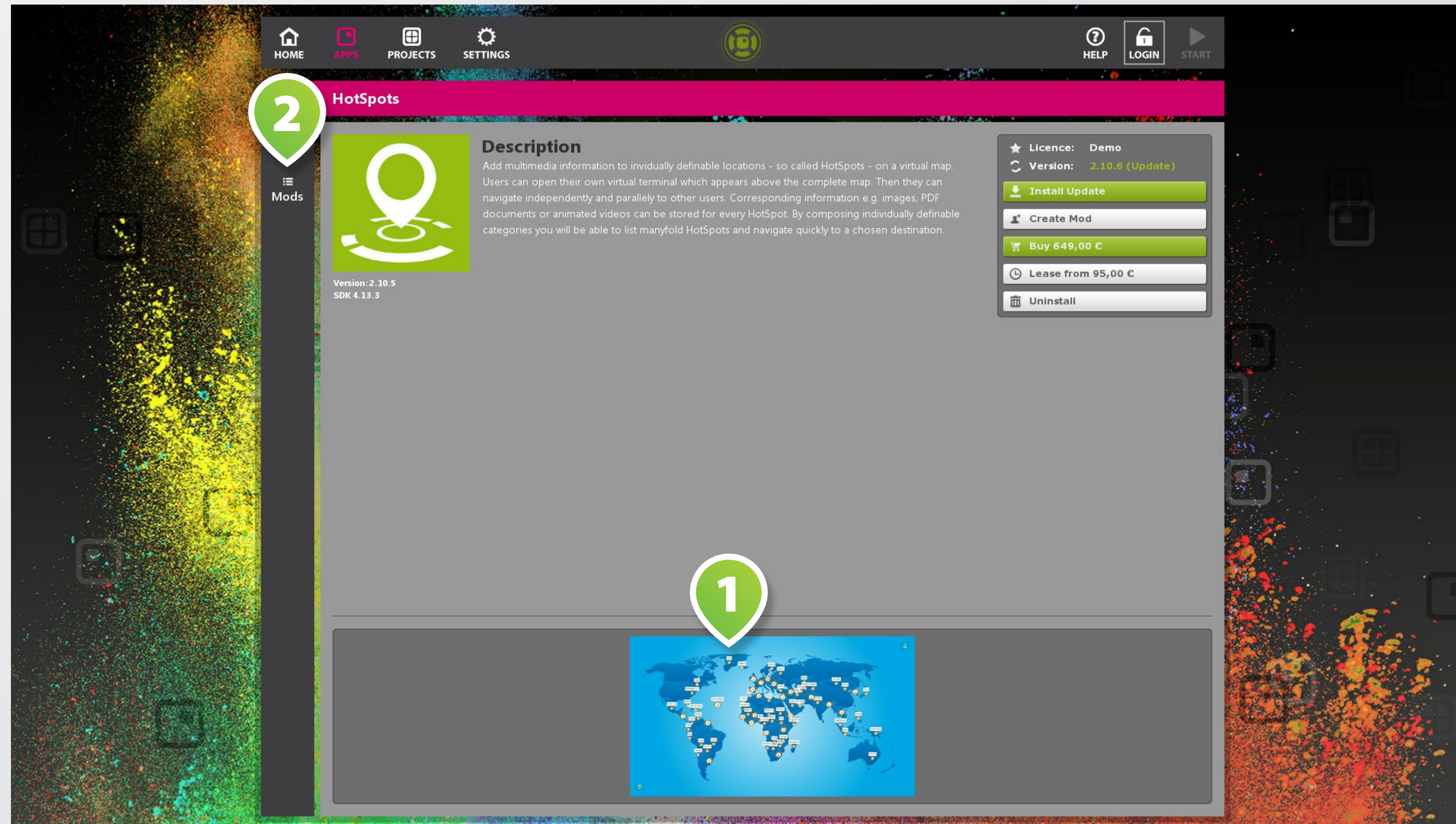


Switch to apps overview via **APPS** **1** in main menu.

All apps available in the eyefac-tive AppStore are listed here. Tap on the desired app's **LIST ITEM** **2** for details.

Find details about updates, licen-sing and installation status infor-mation in the **BOXES** **3** to the right of each app's list item.

APP DETAILS



For sample screenshots of an app tap on an **IMAGE 1** at the bottom.

Tap **MODS 2** to switch to an overview of all existing *modifications* (=mods) of the corresponding app.

PROJECTS



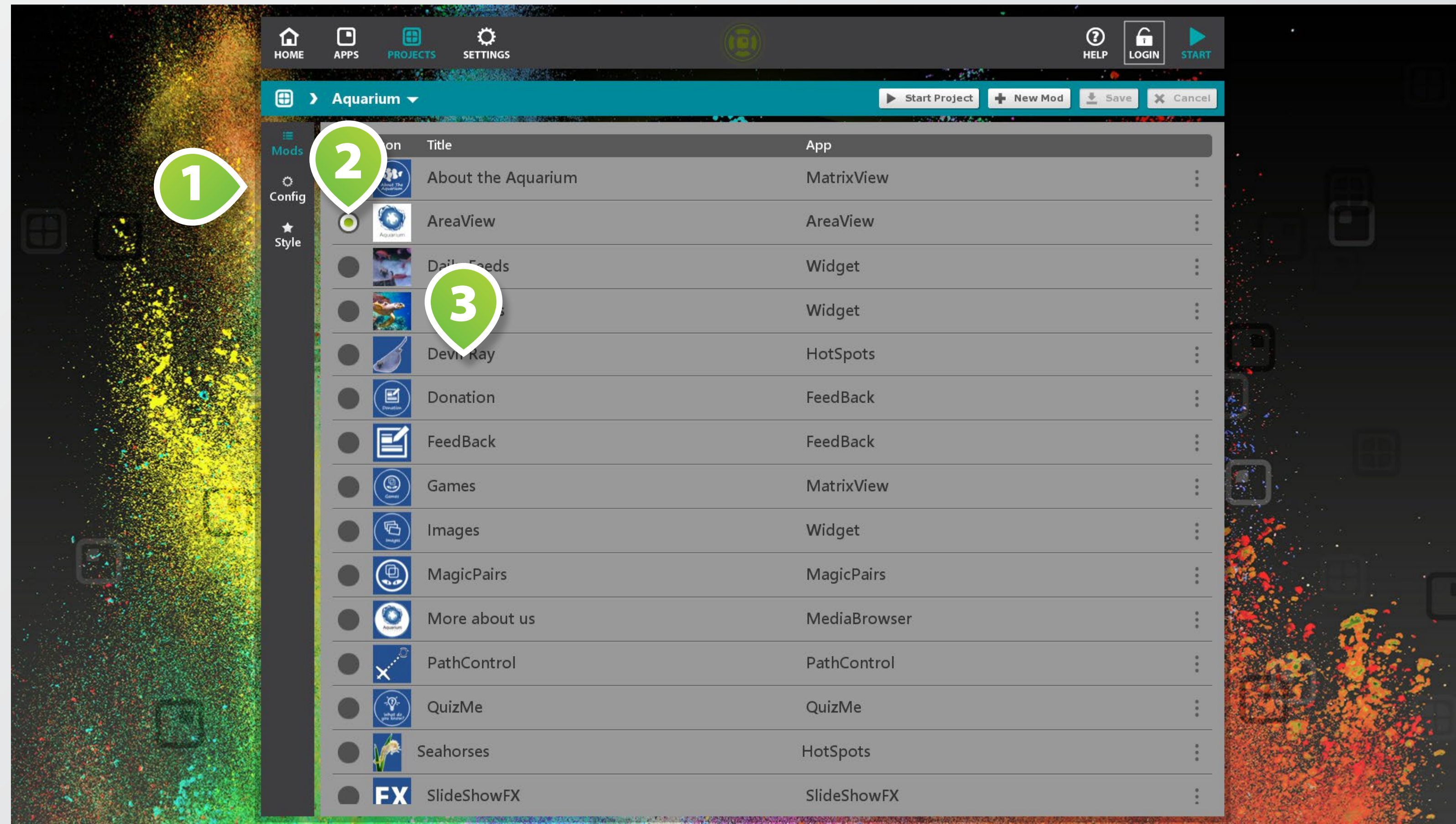
Switch to project overview via **PROJECTS 1** in main menu. All downloaded and self created projects are listed here.

Set up the project overview by using the **FILTER-BOX** on the upper right **2**.

Tap on the **LIST ITEM 3** of the desired project for details.

Select the **RADIO BUTTON 4** of the project that you want to be active when starting AppSuite.

PROJECT DETAILS

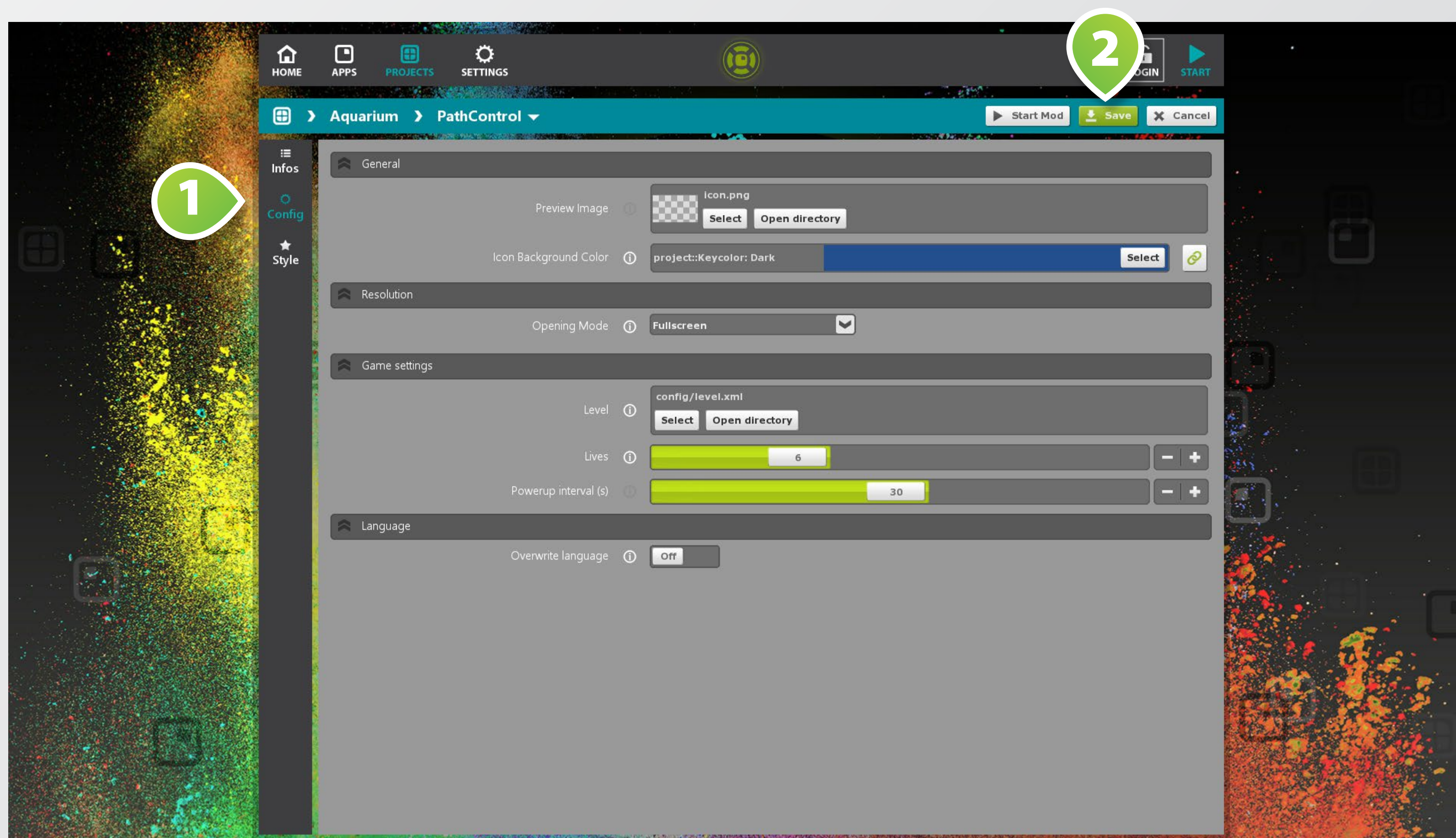


You can configure your project by options **CONFIG** and **STYLE** **1** on the left of the screen.

Activate the **RADIO BUTTON** **2** of a mod that you want to start up automatically when starting the project.

To configure a mod, select it from **MOD OVERVIEW LIST** **3** by tapping on it.

MODS



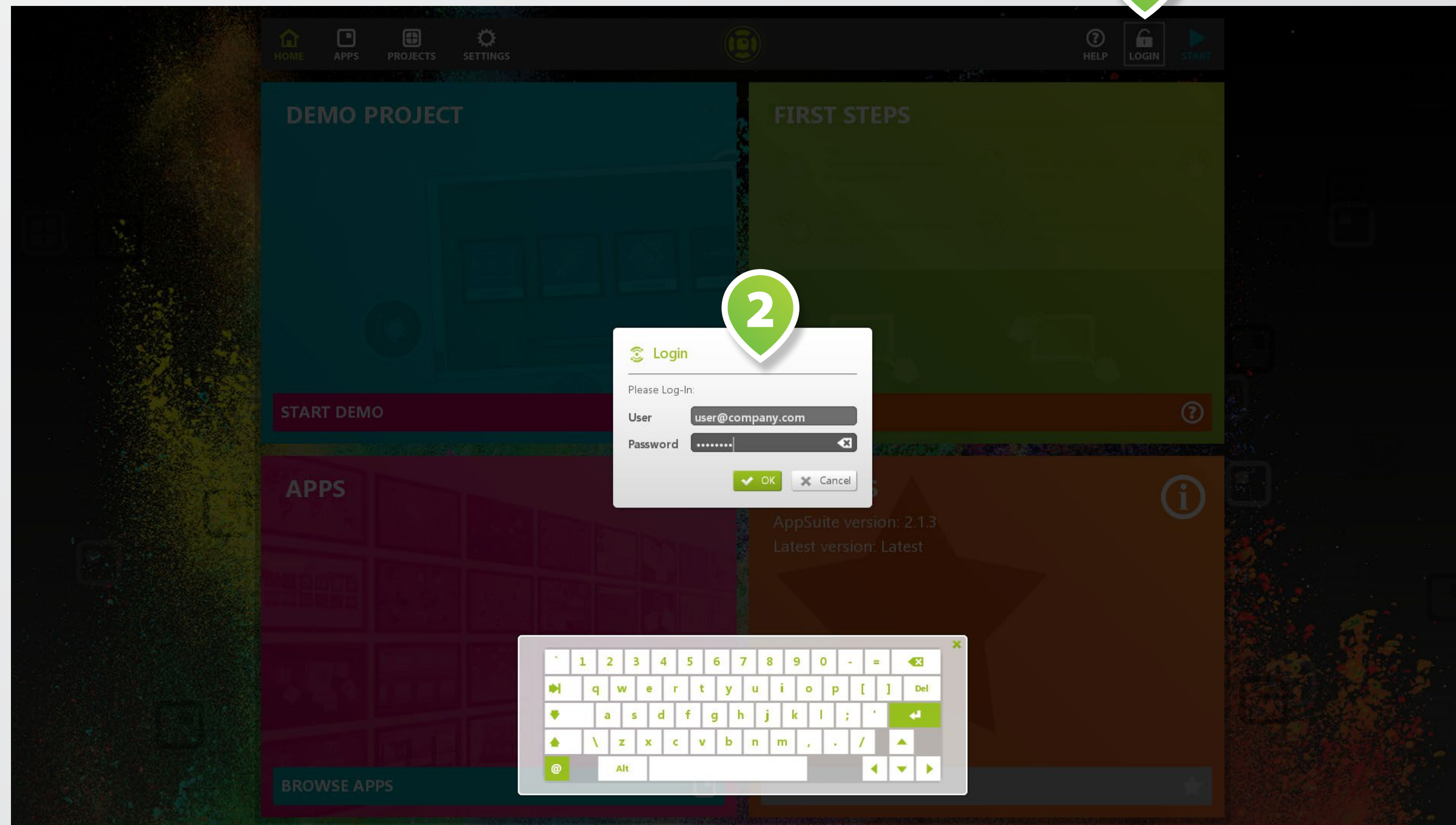
Mod is the abbreviation for *modification*, a term for individual customizations of apps, views and widgets.

Mods are grouped in projects and have their own names, content and styles.

To customize a mod, use the different **SETTING SECTIONS** 1 on the left.

When finished, tap on **SAVE** 2. Please find more information about app customization in our special documentation.

APPSTORE



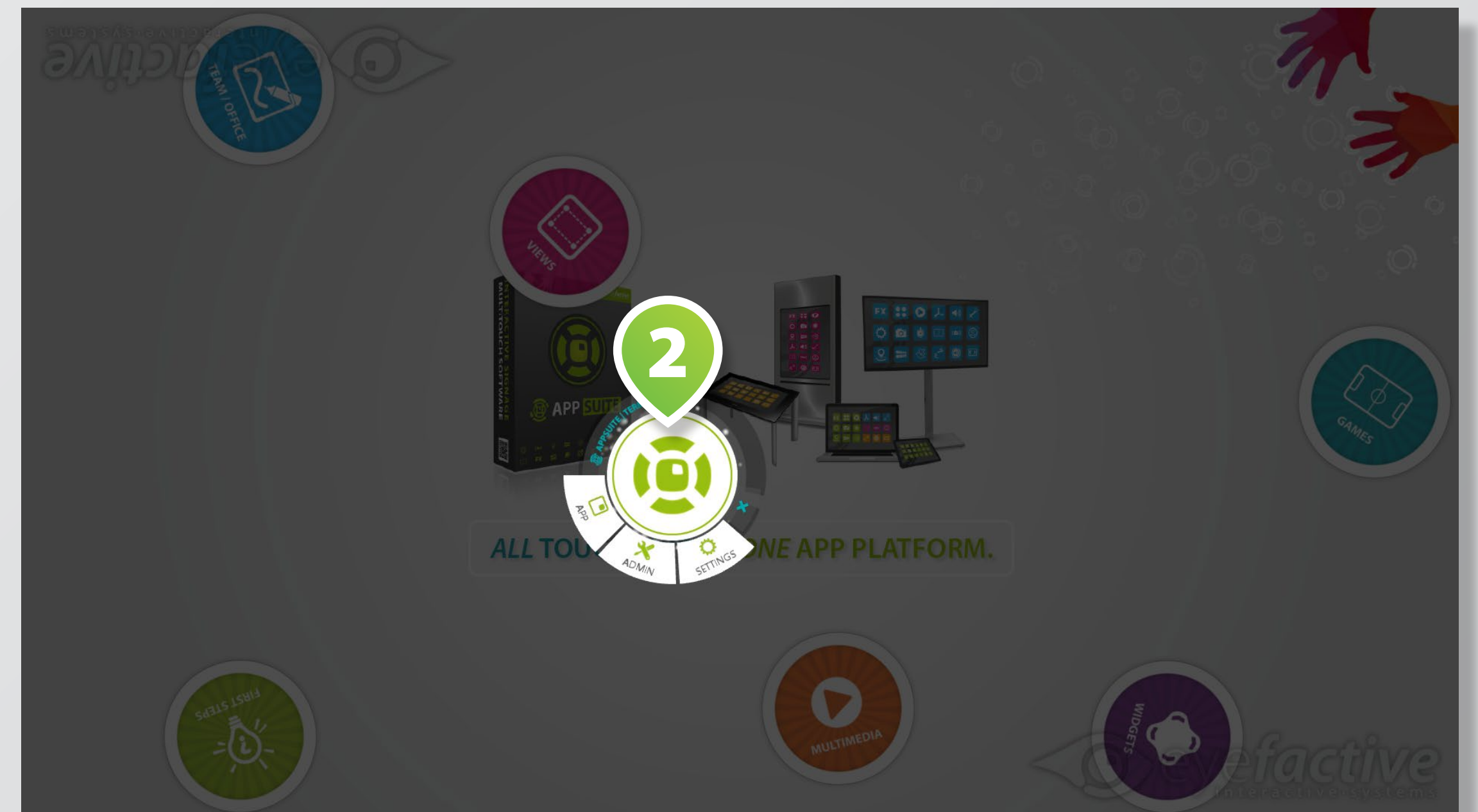
The **APPSTORE** is directly integrated in the AppSuite. You need to log in to purchase / rent apps and download personalized projects.

Tap on the **LOGIN BUTTON 1** to open the **LOGIN DIALOG 2**.

Enter your user credentials to log in to your existing appstore user account.

Please go to **WWW.MULTI-TOUCH-APPSTORE.COM** for further information.

QUIT APPSUITE



The terminal is your virtual remote control. Drag the **TERMINAL ICON 1** to the center of the screen to open the **TERMINAL 2**. To quit AppSuite: Select [ADMIN] > [QUIT] or press key <ESC>.