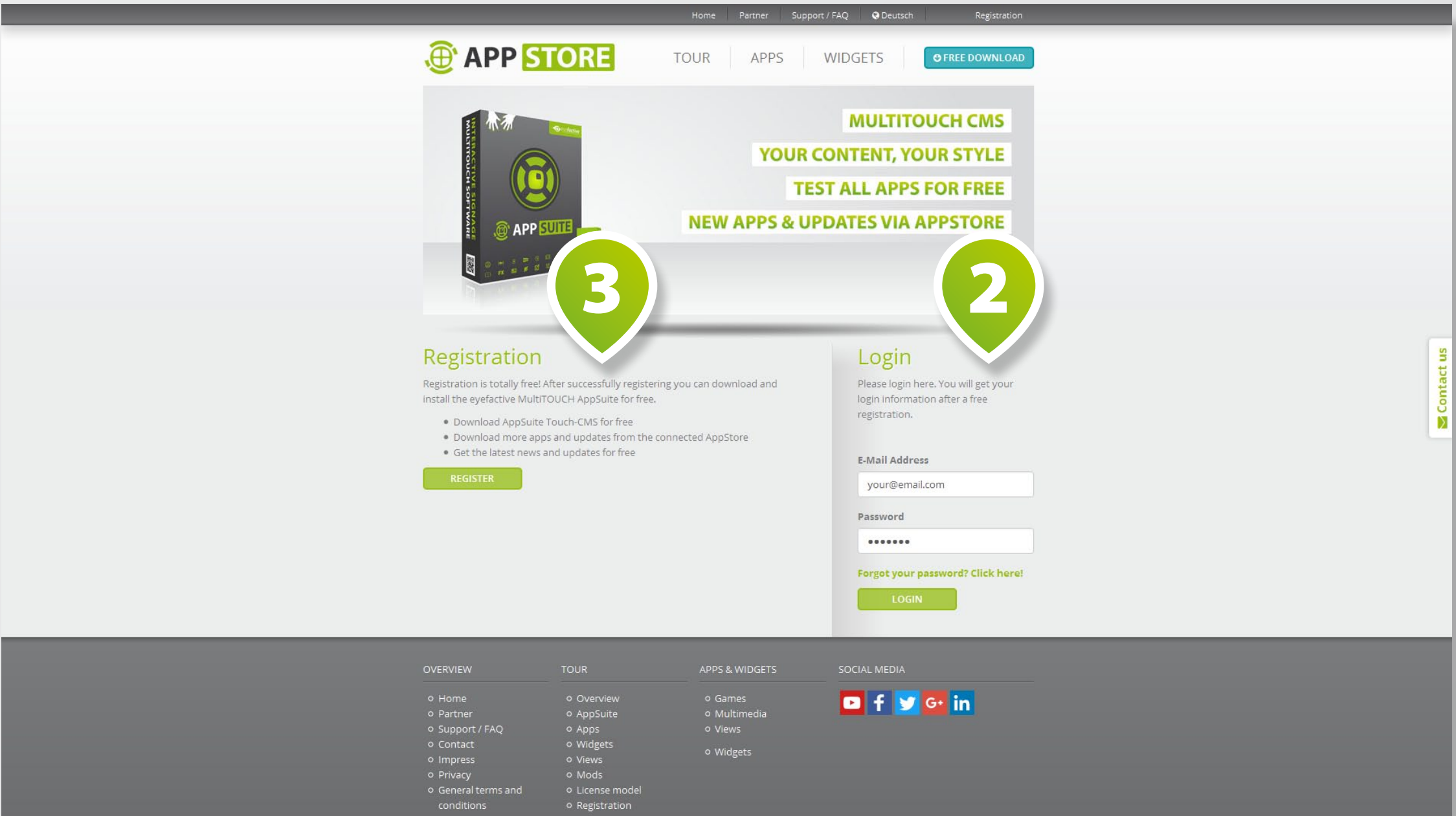
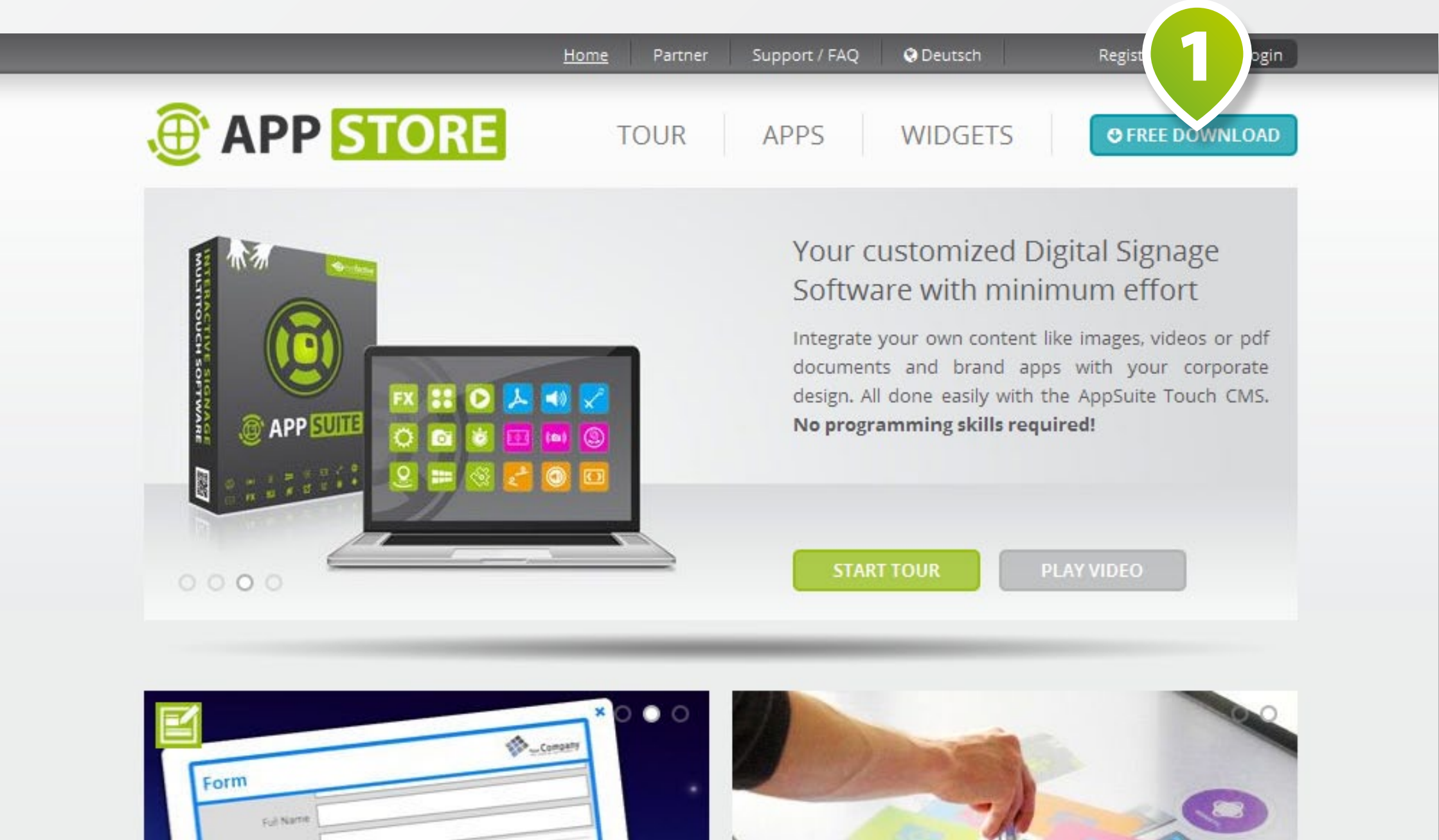


# HOW-TO: INSTALL APPSUITE

# DOWNLOAD APPSUITE



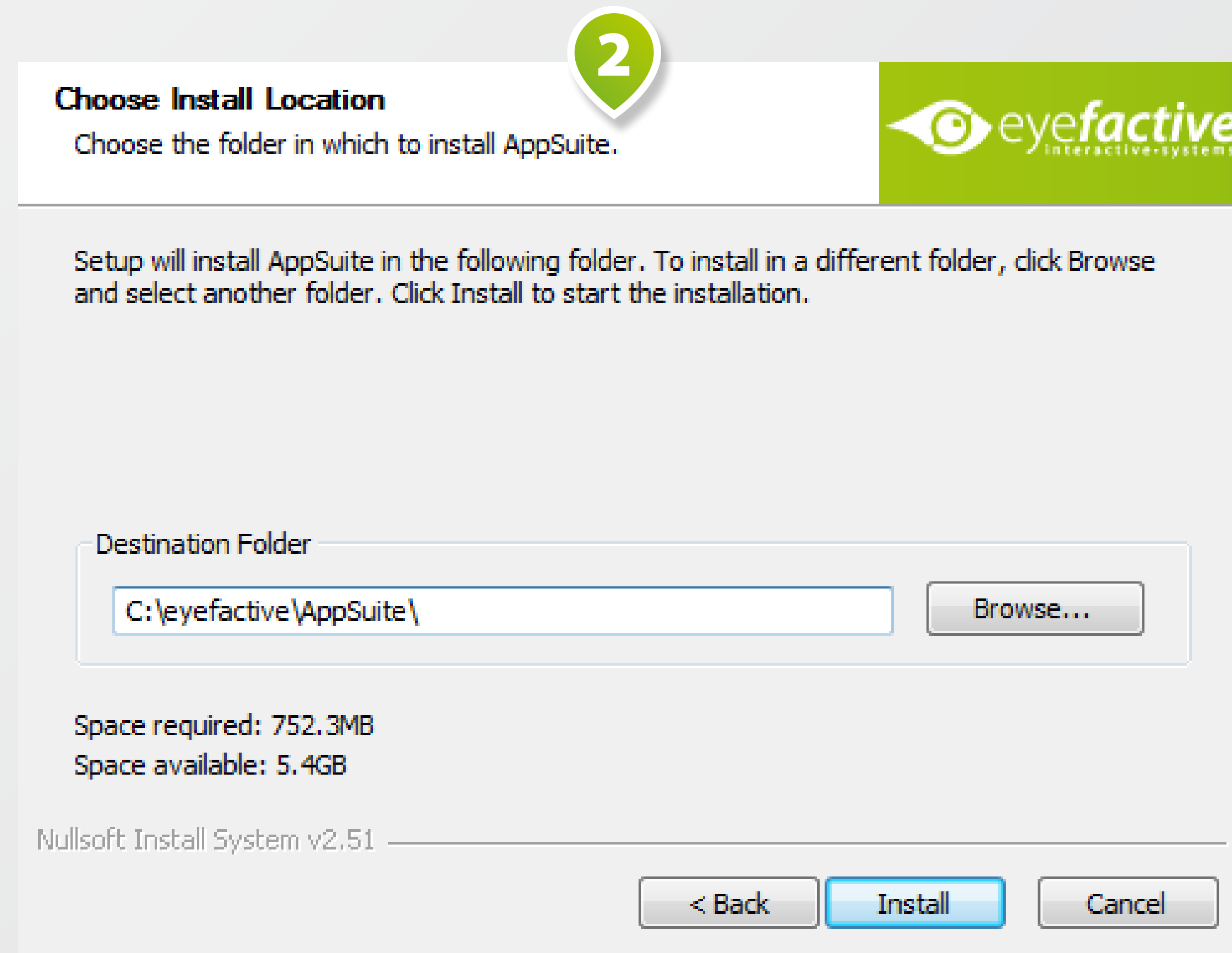
Please browse to **WWW.MULTITOUCH-APPSTORE.COM** and hit the **DOWNLOAD BUTTON 1**. In order to download AppSuite, you need to **LOGIN 2** with your AppStore account. You will get your login credentials after a free **REGISTRATION 3**.



# INSTALL AND START APPSUITE





INSTALL



START

Double-click on the downloaded **EXECUTABLE FILE 1** and follow the instructions within **INSTALLATION WIZARD 2**. Start AppSuite by clicking on the respective **START SCRIPT FILE 3** in the respective destination folder.

# HARDWARE: PC REQUIREMENTS

	MINIMUM	STANDARD	HIGH-END
CPU	Intel Core 2 Quad	Intel i5	Intel i7
GPU (Graphics card)	Intel HD 5000 (shared memory)	NVidia GTS 250 (dedicated card)	NVidia GTX 760 (dedicated card)
RAM	2 GB	4 GB	8 GB
OPERATING SYSTEM (OS)	Windows 7 / 8 / 10 (32 / 64 bit)	Windows 7 / 8 / 10 (64 bit)	Windows 7 / 8 / 10 (64 bit)
RECOMMENDED FOR	Test-System (Laptop) 	Live-System (FullHD) 	Live-System (4K / 8K / Video-Wall) 